

YFB3 系列粉尘防爆型三相异步电动机

YFB3 Series Dust Explosion-proof Three-phase Induction Motors



机座号 80~355 功 率 0.18~315kW
 工作制 S1 绝缘等级 F
 能效等级: 中国 GB18613-2020 3 级 (IE3 Efficiency)

适用于: 粮食仓库和粮食加工及纺织、化工等可燃或爆炸性粉尘环境。
Applications: Grain storage facilities, food processing, textile mill, chemical plant and other applications where hazardous fumes or dust may be present area.

防爆标志 Ex-code: Ex tD A21 IP65 T135°C

温度组别 Temperature Group: T1~T4

特点: 限制外壳最高表面温度和采用“尘密”(IP65)来限制粉尘进入。

Features: Limit the maximum surface temperature and have IP65 protection class of the enclosure to ensure limit the dust go inside the motor.

性能数据 Performance Data

380V 50Hz

型号 Type	功率 kW	额定 电流 A	转速 r/min	效率 Eff. %	功率 因数 P.F	额定 转矩 N.m	堵转转矩 额定转矩 $\frac{T_{st}}{T_N}$	堵转电流 额定电流 $\frac{I_{st}}{I_N}$	最大转矩 额定转矩 $\frac{T_{max}}{T_N}$	噪声 dB(A)
同步转速 3000 r/min										
YFB3-71M1-2	0.37	0.94	2770	73.8	0.81	1.28	2.3	7.0	2.2	62
YFB3-71M2-2	0.55	1.3	2795	77.8	0.82	1.88	2.3	7.0	2.3	62
YFB3-80M1-2	0.75	1.7	2870	80.7	0.82	2.50	2.3	7.0	2.3	62
YFB3-80M2-2	1.1	2.4	2875	82.7	0.83	3.65	2.2	7.6	2.3	62
YFB3-90S-2	1.5	3.2	2880	84.2	0.84	4.97	2.2	7.9	2.3	67
YFB3-90L-2	2.2	4.6	2880	85.9	0.85	7.30	2.2	7.9	2.3	67
YFB3-100L-2	3	6.0	2880	87.1	0.87	10.0	2.2	8.5	2.3	74
YFB3-112M-2	4	7.8	2915	88.1	0.88	13.1	2.2	8.5	2.3	77
YFB3-132S1-2	5.5	10.6	2935	89.2	0.88	17.9	2.0	8.5	2.3	79
YFB3-132S2-2	7.5	14.4	2930	90.1	0.88	24.4	2.0	8.5	2.3	79
YFB3-160M1-2	11	20.6	2950	91.2	0.89	35.6	2.0	8.5	2.3	81
YFB3-160M2-2	15	27.9	2945	91.9	0.89	48.6	2.0	8.5	2.3	81
YFB3-160L-2	18.5	34.2	2945	92.4	0.89	60.0	2.0	8.5	2.3	81
YFB3-180M-2	22	40.5	2950	92.7	0.89	71.2	2.0	8.5	2.3	83
YFB3-200L1-2	30	54.9	2965	93.3	0.89	96.6	2.0	8.5	2.3	84
YFB3-200L2-2	37	67.4	2965	93.7	0.89	119	2.0	8.5	2.3	84
YFB3-225M-2	45	80.8	2965	94.0	0.90	145	2.0	8.0	2.3	86
YFB3-250M-2	55	98.5	2975	94.3	0.90	177	2.0	8.0	2.3	89
YFB3-280S-2	75	134	2975	94.7	0.90	241	1.8	7.5	2.3	91
YFB3-280M-2	90	160	2975	95.0	0.90	289	1.8	7.5	2.3	91
YFB3-315S-2	110	195	2975	95.2	0.90	353	1.8	7.5	2.3	92
YFB3-315M-2	132	234	2975	95.4	0.90	424	1.8	7.5	2.3	92
YFB3-315L1-2	160	279	2975	95.6	0.91	514	1.8	7.5	2.3	92
YFB3-315L2-2	200	349	2975	95.8	0.91	642	1.8	7.5	2.2	92

性能数据 Performance Data

380V 50Hz

型号 Type	功率 kW	额定 电流 A	转速 r/min	效率 Eff. %	功率 因数 P.F	额定 转矩 N.m	堵转转矩 额定转矩 $\frac{T_{st}}{T_N}$	堵转电流 额定电流 $\frac{I_{st}}{I_N}$	最大转矩 额定转矩 $\frac{T_{max}}{T_N}$	噪声 dB(A)
同步转速 3000 r/min										
YFB3-355S1-2	185	323	2980	95.7	0.91	592	1.8	7.5	2.3	100
YFB3-355S2-2	200	349	2980	95.8	0.91	641	1.8	7.5	2.2	100
YFB3-355M1-2	220	383	2980	95.8	0.91	705	1.8	7.5	2.2	100
YFB3-355M2-2	250	436	2980	95.8	0.91	801	1.6	7.5	2.2	100
YFB3-355L1-2	280	488	2980	95.8	0.91	897	1.6	7.5	2.2	100
YFB3-355L2-2	315	549	2980	95.8	0.91	1009	1.6	7.5	2.2	100
YFB3-355L3-2	355	619	2980	95.8	0.91	1137	1.6	7.2	2.2	104
YFB3-355L4-2	375	654	2980	95.8	0.91	1202	1.6	7.2	2.2	104
同步转速 1500 r/min										
YFB3-71M1-4	0.25	0.70	1355	73.5	0.74	1.76	2.1	6.6	2.2	55
YFB3-71M2-4	0.37	0.98	1375	77.3	0.75	2.57	2.1	6.6	2.2	55
YFB3-80M1-4	0.55	1.4	1430	80.8	0.75	3.67	2.4	6.6	2.3	56
YFB3-80M2-4	0.75	1.8	1430	82.5	0.75	5.01	2.3	6.6	2.3	56
YFB3-90S-4	1.1	2.6	1430	84.1	0.76	7.35	2.3	6.8	2.3	59
YFB3-90L-4	1.5	3.5	1430	85.3	0.77	10.0	2.3	7.0	2.3	59
YFB3-100L1-4	2.2	4.8	1440	86.7	0.81	14.6	2.3	7.6	2.3	64
YFB3-100L2-4	3	6.3	1440	87.7	0.82	19.9	2.3	7.6	2.3	64
YFB3-112M-4	4	8.4	1455	88.6	0.82	26.3	2.2	7.8	2.3	65
YFB3-132S-4	5.5	11.2	1465	89.6	0.83	35.9	2.0	7.9	2.3	71
YFB3-132M-4	7.5	15.0	1465	90.4	0.84	48.9	2.0	7.5	2.3	71
YFB3-160M-4	11	21.5	1470	91.4	0.85	71.5	2.2	7.7	2.3	73
YFB3-160L-4	15	28.8	1470	92.1	0.86	97.4	2.2	7.8	2.3	73
YFB3-180M-4	18.5	35.3	1470	92.6	0.86	120	2.0	7.8	2.3	76
YFB3-180L-4	22	41.8	1470	93.0	0.86	143	2.0	7.8	2.3	76
YFB3-200L-4	30	56.6	1475	93.6	0.86	194	2.0	7.3	2.3	76
YFB3-225S-4	37	69.6	1480	93.9	0.86	239	2.0	7.4	2.3	78
YFB3-225M-4	45	84.4	1480	94.2	0.86	290	2.0	7.4	2.3	78
YFB3-250M-4	55	103	1485	94.6	0.86	354	2.2	7.4	2.3	79
YFB3-280S-4	75	136	1490	95.0	0.88	481	2.0	6.9	2.3	80
YFB3-280M-4	90	163	1490	95.2	0.88	577	2.0	6.9	2.3	80
YFB3-315S-4	110	197	1485	95.4	0.89	707	2.0	7.0	2.2	88
YFB3-315M-4	132	236	1485	95.6	0.89	849	2.0	7.0	2.2	88
YFB3-315L1-4	160	285	1485	95.8	0.89	1029	2.0	7.1	2.2	88
YFB3-315L2-4	200	352	1485	96.0	0.90	1286	2.0	7.1	2.2	88
YFB3-355S1-4	185	329	1490	95.9	0.89	1186	2.0	7.1	2.2	95
YFB3-355S2-4	200	352	1490	96.0	0.90	1282	2.0	7.1	2.2	95
YFB3-355M1-4	220	387	1490	96.0	0.90	1410	2.0	7.1	2.2	95
YFB3-355M2-4	250	440	1495	96.0	0.90	1597	2.0	7.1	2.2	95
YFB3-355L1-4	280	492	1495	96.0	0.90	1789	2.0	7.1	2.2	95
YFB3-355L2-4	315	554	1495	96.0	0.90	2012	2.0	7.1	2.2	95
YFB3-355L3-4	355	638	1495	96.0	0.90	2268	1.7	7.0	2.2	102
YFB3-355L4-4	375	674	1495	96.0	0.90	2395	1.7	7.0	2.2	102

性能数据 Performance Data

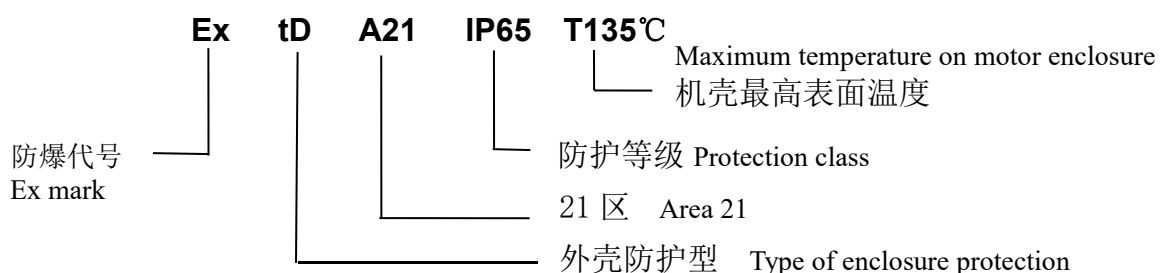
380V 50Hz

型号 Type	功率 kW	额定 电流 A	转速 r/min	效率 Eff.%	功率 因数 P.F	额定 转矩 N.m	堵转转矩 额定转矩 $\frac{T_{st}}{T_N}$	堵转电流 额定电流 $\frac{I_{st}}{I_N}$	最大转矩 额定转矩 $\frac{T_{max}}{T_N}$	噪声 dB(A)
同步转速 1000 r/min										
YFB3-71M1-6	0.18	0.65	870	63.9	0.66	1.98	1.9	6.0	2.0	52
YFB3-71M2-6	0.25	0.83	870	68.6	0.68	2.74	1.9	6.0	2.0	52
YFB3-80M1-6	0.37	1.1	925	73.5	0.70	3.82	1.9	6.0	2.1	54
YFB3-80M2-6	0.55	1.5	925	77.2	0.71	5.68	1.9	6.0	2.1	54
YFB3-90S-6	0.75	2.0	945	78.9	0.71	7.58	2.0	6.0	2.1	57
YFB3-90L-6	1.1	2.8	950	81.0	0.73	11.1	2.0	6.0	2.1	57
YFB3-100L-6	1.5	3.8	950	82.5	0.73	15.1	2.0	6.5	2.1	61
YFB3-112M-6	2.2	5.4	965	84.3	0.74	21.8	2.0	6.6	2.1	65
YFB3-132S-6	3	7.2	975	85.6	0.74	29.4	2.0	6.8	2.1	69
YFB3-132M1-6	4	9.5	975	86.8	0.74	39.2	2.0	6.8	2.1	69
YFB3-132M2-6	5.5	12.7	975	88.0	0.75	53.9	2.0	7.0	2.1	69
YFB3-160M-6	7.5	16.2	980	89.1	0.79	73.1	2.0	7.0	2.1	70
YFB3-160L-6	11	23.1	980	90.3	0.80	107	2.0	7.2	2.1	70
YFB3-180L-6	15	30.9	980	91.2	0.81	146	2.0	7.3	2.1	73
YFB3-200L1-6	18.5	37.8	985	91.7	0.81	179	2.0	7.3	2.1	73
YFB3-200L2-6	22	44.8	985	92.2	0.81	213	2.0	7.4	2.1	73
YFB3-225M-6	30	59.1	985	92.9	0.83	291	2.0	6.9	2.1	74
YFB3-250M-6	37	71.7	985	93.3	0.84	359	2.0	7.1	2.1	76
YFB3-280S-6	45	85.8	990	93.7	0.85	434	2.0	7.3	2.0	78
YFB3-280M-6	55	103	990	94.1	0.86	531	2.0	7.3	2.0	78
YFB3-315S-6	75	143	990	94.6	0.84	723	2.0	6.6	2.0	83
YFB3-315M-6	90	170	990	94.9	0.85	868	2.0	6.7	2.0	83
YFB3-315L1-6	110	207	990	95.1	0.85	1061	2.0	6.7	2.0	83
YFB3-315L2-6	132	244	990	95.4	0.86	1273	2.0	6.8	2.0	83
YFB3-355S-6	160	296	990	95.6	0.86	1543	1.8	6.8	2.0	85
YFB3-355M1-6	185	342	990	95.7	0.86	1785	1.8	6.8	2.0	85
YFB3-355M2-6	200	365	990	95.8	0.87	1929	1.8	6.8	2.0	85
YFB3-355L1-6	220	401	990	95.8	0.87	2112	1.8	6.8	2.0	85
YFB3-355L2-6	250	456	990	95.8	0.87	2412	1.8	6.8	2.0	85
YFB3-355L3-6	280	510	990	95.8	0.87	2701	1.8	6.8	2.0	91
YFB3-355L4-6	315	581	990	95.8	0.86	3039	1.8	6.8	2.0	91
同步转速 750 r/min										
YFB3-80M1-8	0.18	0.8	690	58.7	0.61	2.49	1.8	5.2	1.9	52
YFB3-80M2-8	0.25	1.0	690	64.1	0.61	3.46	1.8	5.7	1.9	52
YFB3-90S-8	0.37	1.3	695	69.3	0.61	5.08	1.8	6.2	1.9	56
YFB3-90L-8	0.55	1.9	695	73.0	0.61	7.56	1.8	5.9	2.0	56
YFB3-100L1-8	0.75	2.3	705	75.0	0.67	10.2	1.8	6.2	2.0	59
YFB3-100L2-8	1.1	3.1	705	77.7	0.69	14.9	1.8	6.2	2.0	59
YFB3-112M-8	1.5	4.1	710	79.7	0.70	20.2	1.8	6.7	2.0	61
YFB3-132S-8	2.2	5.7	725	81.9	0.71	29.0	1.8	6.7	2.0	64
YFB3-132M-8	3	7.5	725	83.5	0.73	39.5	1.8	6.9	2.0	64
YFB3-160M1-8	4	9.8	730	84.8	0.73	52.3	1.9	6.9	2.0	68

型号 Type	功率 kW	额定 电流 A	转速 r/min	效率 Eff.%	功率 因数 P.F	额定 转矩 N.m	堵转转矩 额定转矩 $\frac{T_{st}}{T_N}$	堵转电流 额定电流 $\frac{I_{st}}{I_N}$	最大转矩 额定转矩 $\frac{T_{max}}{T_N}$	噪声 dB(A)
同步转速 750 r/min										
YFB3-160M2-8	5.5	13.1	730	86.2	0.74	72.0	1.9	6.9	2.0	68
YFB3-160L-8	7.5	17.4	730	87.3	0.75	98.1	1.9	6.6	2.0	68
YFB3-180L-8	11	25.2	730	88.6	0.75	144	2.0	6.6	2.0	70
YFB3-200L-8	15	33.5	735	89.6	0.76	195	2.0	6.8	2.0	73
YFB3-225S-8	18.5	41.0	735	90.1	0.76	240	1.9	6.8	2.0	73
YFB3-225M-8	22	47.3	735	90.6	0.78	286	1.9	7.0	2.0	73
YFB3-250M-8	30	63.2	735	91.3	0.79	390	1.9	6.7	2.0	75
YFB3-280S-8	37	77.5	740	91.8	0.79	478	1.9	6.7	2.0	76
YFB3-280M-8	45	93.9	740	92.2	0.79	581	1.9	6.7	2.0	76
YFB3-315S-8	55	112	740	92.5	0.81	710	1.8	6.8	2.0	82
YFB3-315M-8	75	151	740	93.1	0.81	968	1.8	6.3	2.0	82
YFB3-315L1-8	90	179	740	93.4	0.82	1161	1.8	6.4	2.0	82
YFB3-315L2-8	110	218	740	93.7	0.82	1420	1.8	6.4	2.0	82
YFB3-355S-8	132	260	745	94.0	0.82	1692	1.8	6.4	2.0	89
YFB3-355M-8	160	314	745	94.3	0.82	2051	1.8	6.4	2.0	89
YFB3-355L1-8	185	363	745	94.5	0.82	2371	1.8	6.4	2.0	89
YFB3-355L2-8	200	387	745	94.6	0.83	2564	1.8	6.4	2.0	89
YFB3-355L3-8	220	426	745	94.6	0.83	2820	1.8	6.4	2.0	90
YFB3-355L4-8	250	484	745	94.6	0.83	3205	1.8	6.5	2.0	90
同步转速 600 r/min										
YFB3-315S-10	45	99	590	92.0	0.75	728	1.5	6.2	2.0	90
YFB3-315M-10	55	120	590	92.0	0.75	890	1.5	6.2	2.0	90
YFB3-315L1-10	75	162	590	92.8	0.76	1214	1.5	5.8	2.0	90
YFB3-315L2-10	90	191	590	93.0	0.77	1457	1.5	5.9	2.0	90
YFB3-355S-10	90	191	590	93.0	0.77	1457	1.5	6.0	2.0	90
YFB3-355M1-10	110	230	595	93.3	0.78	1766	1.3	6.1	2.0	90
YFB3-355M2-10	132	274	595	93.8	0.78	2119	1.3	6.1	2.0	90
YFB3-355L1-10	160	332	595	93.8	0.78	2568	1.3	6.1	2.0	90
YFB3-355L2-10	185	384	595	93.8	0.78	2969	1.3	6.1	2.0	90
YFB3-355L3-10	200	415	595	93.8	0.78	3210	1.3	6.1	2.0	90
YFB3-355L4-10	220	457	595	93.8	0.78	3531	1.3	6.1	2.0	90

防爆标志说明

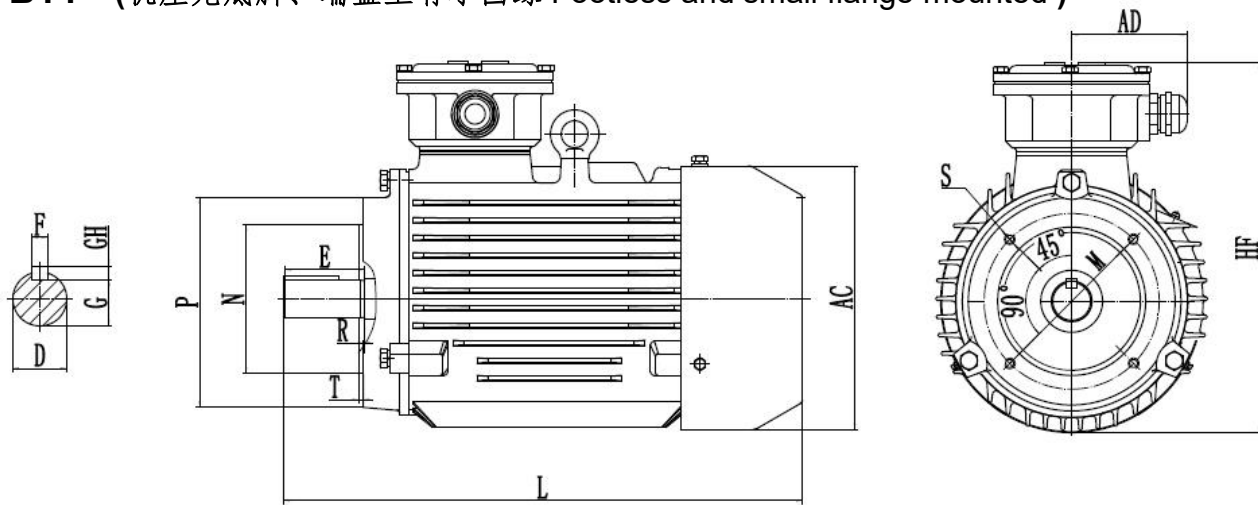
Illustration of the Explosion-proof mark



外形及安装尺寸 Dimensions

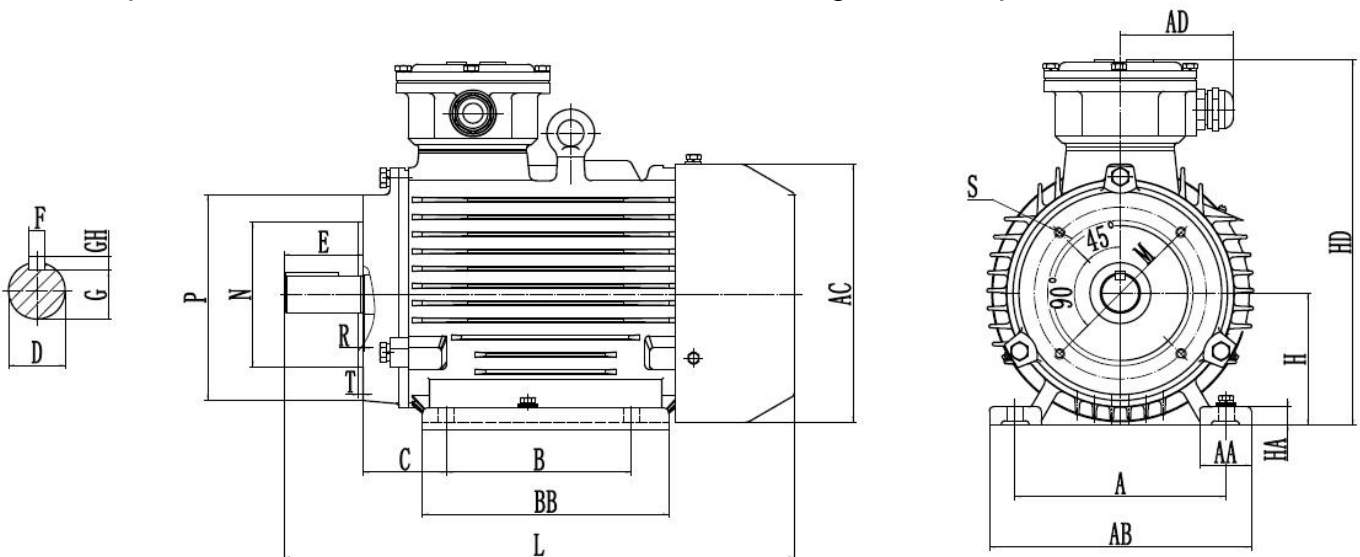
mm

B14 (机座无底脚、端盖上有小凸缘 Footless and small flange mounted)



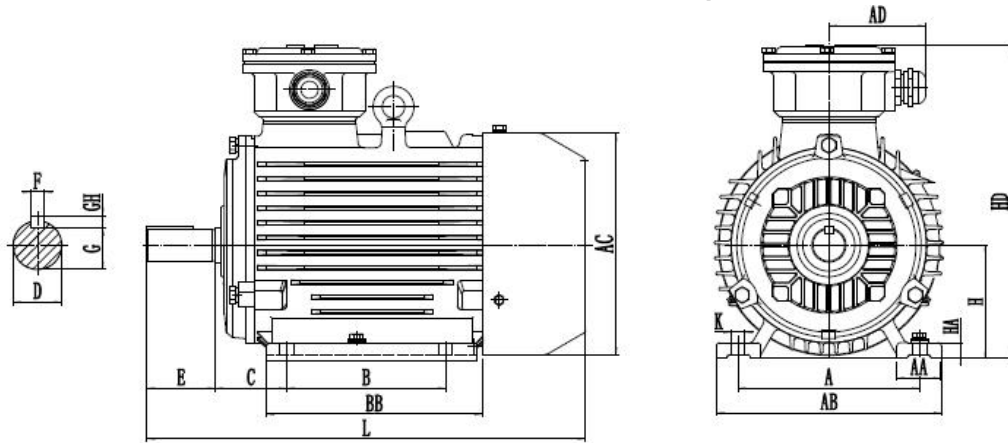
机座号 Frame	极数 Poles	安装尺寸及公差 Mounting Dimension											外形尺寸 Overall Dimension			
		D	E	F	G	M	N	P	R	S	T	AC	AD	HF	L	
80M	2,4,6,8	19	40	6	15.5	100	80	120	0	4-M6	3	165	95	240	295	
90S	2,4,6,8	24	50	8	20	115	95	140	0	4-M8	3	180	95	250	345	
90L	2,4,6,8														385	
100L	2,4,6,8	28	60	8	24	130	110	160	0	4-M8	3.5	205	95	280	390	
112M	2,6,8	28	60	8	24	130	110	160	0	4-M8	3.5	225	115	315	425	
	4														455	

B34 (机座带底脚、端盖上有小凸缘 Foot and small flange mounted)

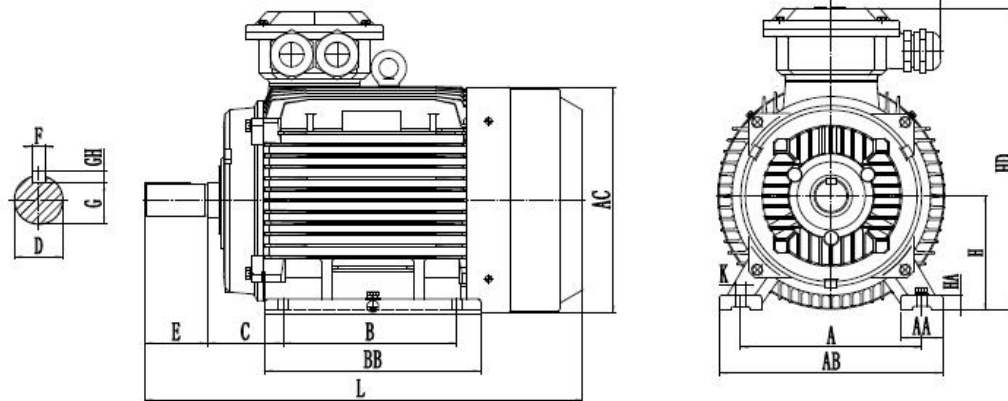


机座号 Frame	极数 Poles	安装尺寸及公差 Mounting Dimension														外形尺寸 Overall Dimension								
		A	B	C	D	E	F	G	H	K	M	N	P	R	S	T	AA	BB	HA	AB	AC	AD	HD	L
80M	2,4,6,8	125	100	50	19	40	6	15.5	80	10	100	80	120	0	4-M6	3	32	135	10	160	165	95	240	295
90S	2,4,6,8	140	100	56	24	50	8	20	90	10	115	95	140	0	4-M8	3	34	170	12	180	180	95	255	345
90L	2,4,6,8		210															385						
100L	2,4,6,8	160	140	63	28	60	8	24	100	12	130	110	160	0	4-M8	3.5	39	186	14	200	205	95	285	390
112M	2,6,8	190	140	70	28	60	8	24	112	12	130	110	160	0	4-M8	3.5	45	200	14	230	225	115	320	425
	4																	230						455

B3 (机座带底脚、端盖无凸缘 Horizontal foot mounted only)



H80-132mm



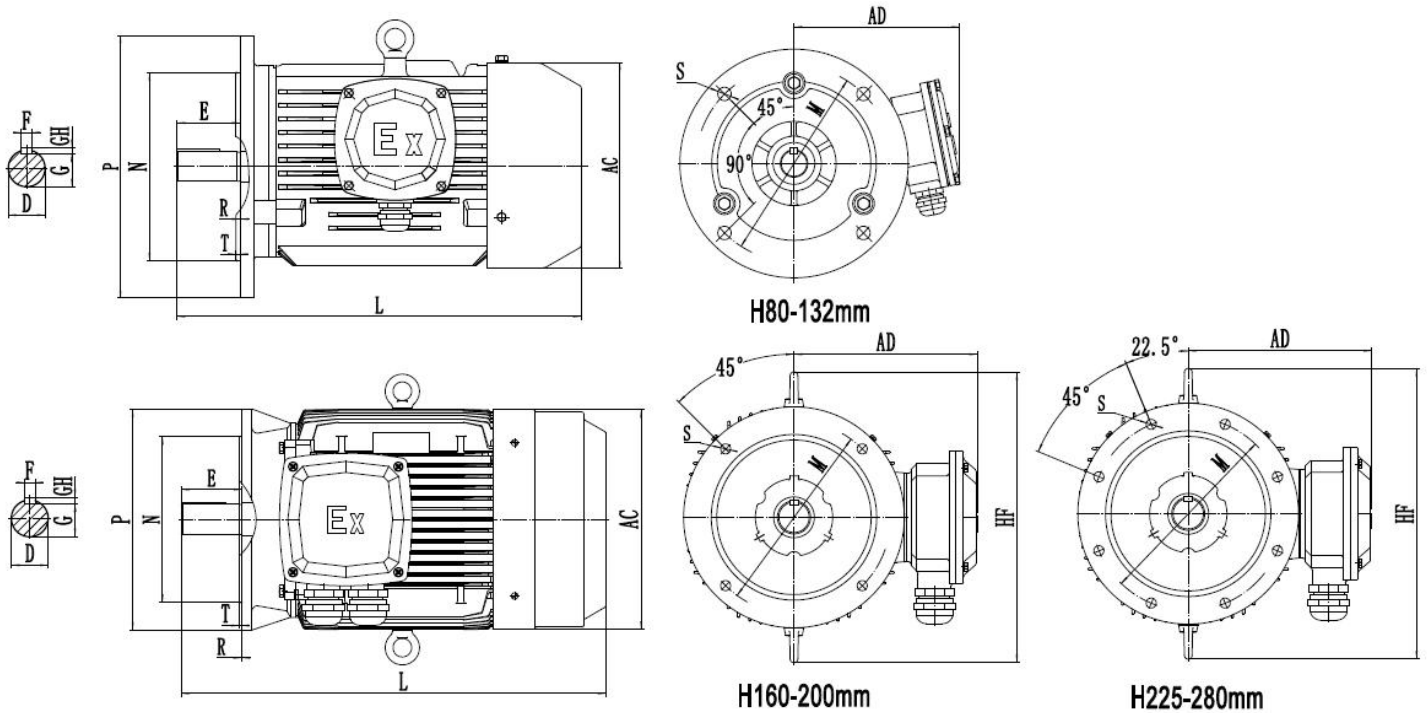
H160-355mm

机座号 Frame	极数 Pole	安 装 尺 寸 Mounting Dimension									外形尺寸 Overall Dimension							
		A	B	C	D	E	F	G	H	K	AA	BB	HA	AB	AC	AD	HD	L
80M	2.4.6.8	125	100	50	19	40	6	15.5	80	10	32	135	10	160	165	95	240	295
90S	2.4.6.8	140	100	56	24	50	8	20	90	10	34	170	12	180	180	95	255	345
90L			125									210						385
100L	2.4.6.8	160	140	63	28	60	8	24	100	12	39	186	14	200	205	95	285	390
112M	2.6.8	190	140	70	28	60	8	24	112	12	45	200	14	230	225	115	320	425
	4											230						455
132S	2.4.6.8	216	140	89	38	80	10	33	132	12	55	190	18	265	270	115	410	475
132M			178									230						510
160M	2.4.6.8	254	210	108	42	110	12	37	160	15	65	260	20	315	320	136	430	610
160L			254									304						655
180M	2.4.6.8	279	241	121	48	110	14	42.5	180	15	70	311	22	355	360	136	480	680
180L			279									349						715
200L	2.4.6.8	318	305	133	55	110	16	49	200	19	74	379	26	395	400	190	540	770
225S	4.8	356	286	149	60	140	18	53	225	19	78	375	28	435	450	190	585	795
225M	2		311	149	55	110	16	49				400						800
	4.6.8				60	140	18	53										
250M	2	406	349	168	60	140	18	53	250	24	80	445	30	490	510	225	665	890
	4.6.8				65	140	18	58										
280S	2	457	368	190	65	140	18	58	280	24	90	485	35	545	550	225	710	975
	4.6.8				75	140	20	67.5										

B3 (机座带底脚、端盖无凸缘 Horizontal foot mounted only)

机座号 Frame	极数 Pole	安 装 尺 寸 Mounting Dimension									外形尺寸 Overall Dimension							
		A	B	C	D	E	F	G	H	K	AA	BB	HA	AB	AC	AD	HD	L
280M	2	457	419	190	65	140	18	58	280	24	90	536	35	545	550	225	710	1025
	75				140	20	67.5											
315S	2	508	406	216	65	140	18	58	315	28	120	570	45	635	630	250	885	1180
	80				170	22	71	1210										
315M	2	508	457	216	65	140	18	58	315	28	120	610	45	635	630	250	885	1215
	80				170	22	71	1245										
315L	2	508	508	216	65	140	18	58	315	28	120	680	45	635	630	250	885	1290
	80				170	22	71	1320										
355M	2	610	560	254	75	140	20	67.5	355	28	130	690	52	735	715	290	1040	1390
	95				170	25	86	1420										
355L1/L2	2	610	630	254	75	140	20	67.5	355	28	130	750	52	735	715	290	1040	1500
	95				170	25	86	1530										

B5 (机座不带底脚、端盖有凸缘 Footless and B5 flange mounted)

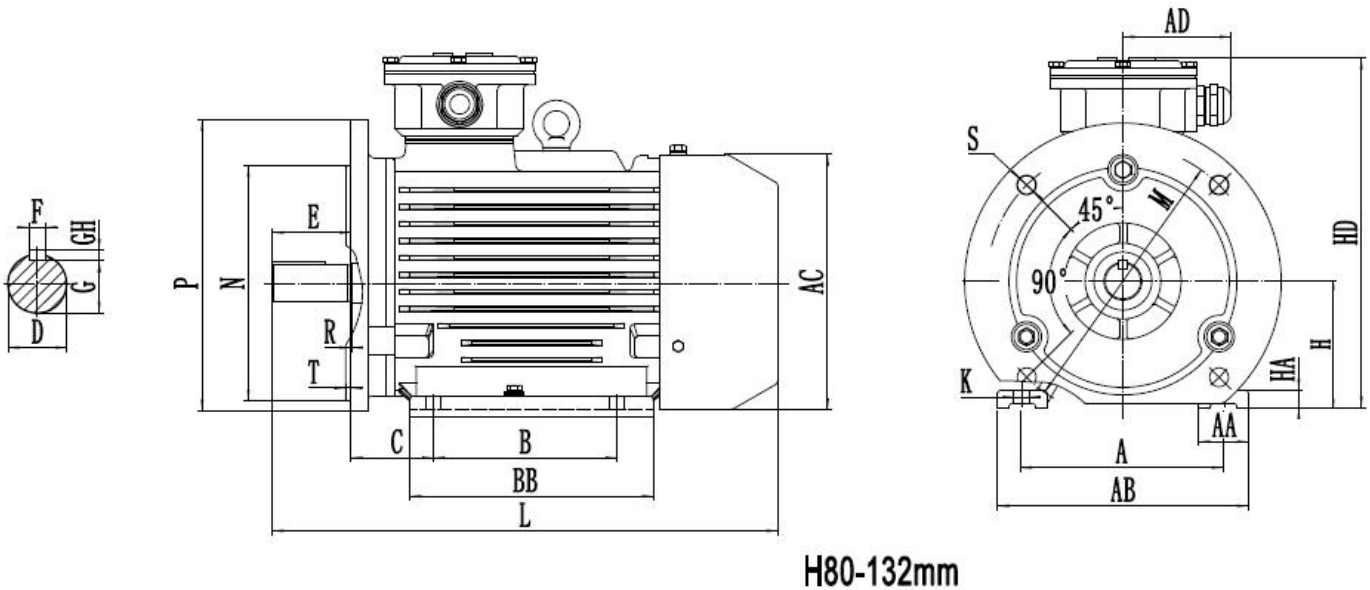


机座号 Frame	极数 Poles	安 装 尺 寸 Mounting Dimension										外形尺寸 Overall Dimension			
		D	E	F	G	M	N	P	R	S	T	AC	AD	HF	L
80M	2.4.6.8	19	40	6	15.5	165	130	200	0	4-φ12	3.5	165	160	/	295
90S	2.4.6.8	24	50	8	20	165	130	200	0	4-φ12	3.5	180	165	/	345
90L															385
100L	2.4.6.8	28	60	8	24	215	180	250	0	4-φ15	4	205	180	/	390
112M	2.6.8	28	60	8	24	215	180	250	0	4-φ15	4	225	205	/	425
	4														455
132S	2.4.6.8	38	80	10	33	265	230	300	0	4-φ15	4	270	240	/	475
132M															510

B5 (机座不带底脚、端盖有凸缘 Footless and B5 flange mounted)

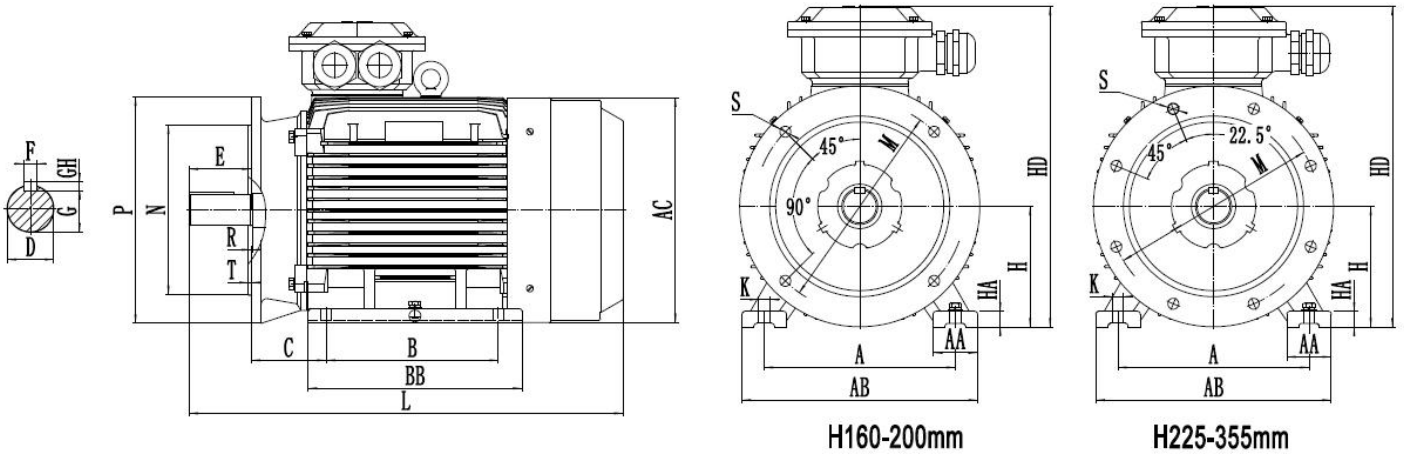
机座号 Frame	极数 Poles	安 装 尺 寸 Mounting Dimension										外形尺寸 Overall Dimension				
		D	E	F	G	M	N	P	R	S	T	AC	AD	HF	L	
160M	2.4.6.8	42	110	12	37	300	250	350	0	4-φ19	5	320	270	435	610	
160L															655	
180M	2.4.6.8	48	110	14	42.5	300	250	350	0	4-φ19	5	360	285	490	680	
180L															715	
200L	2.4.6.8	55	110	16	49	350	300	400	0	4-φ19	5	400	335	550	770	
225S	4.8	60	140	18	53	400	350	450	0	8-φ19	5	450	360	580	795	
225M	2	55	110	16	49										800	
	4.6.8	60	140	18	53										825	
250M	2	60	140	18	53	500	450	550	0	8-φ19	5	510	415	695	890	
	4.6.8	65			58											
280S	2	65	140	18	58	500	450	550	0	8-φ19	5	550	435	725	975	
	4.6.8	75			67.5											
280M	2	65			18										58	1025
	4.6.8	75														

B35 (机座带底脚、端盖有凸缘 Foot and B5 flange mounted)



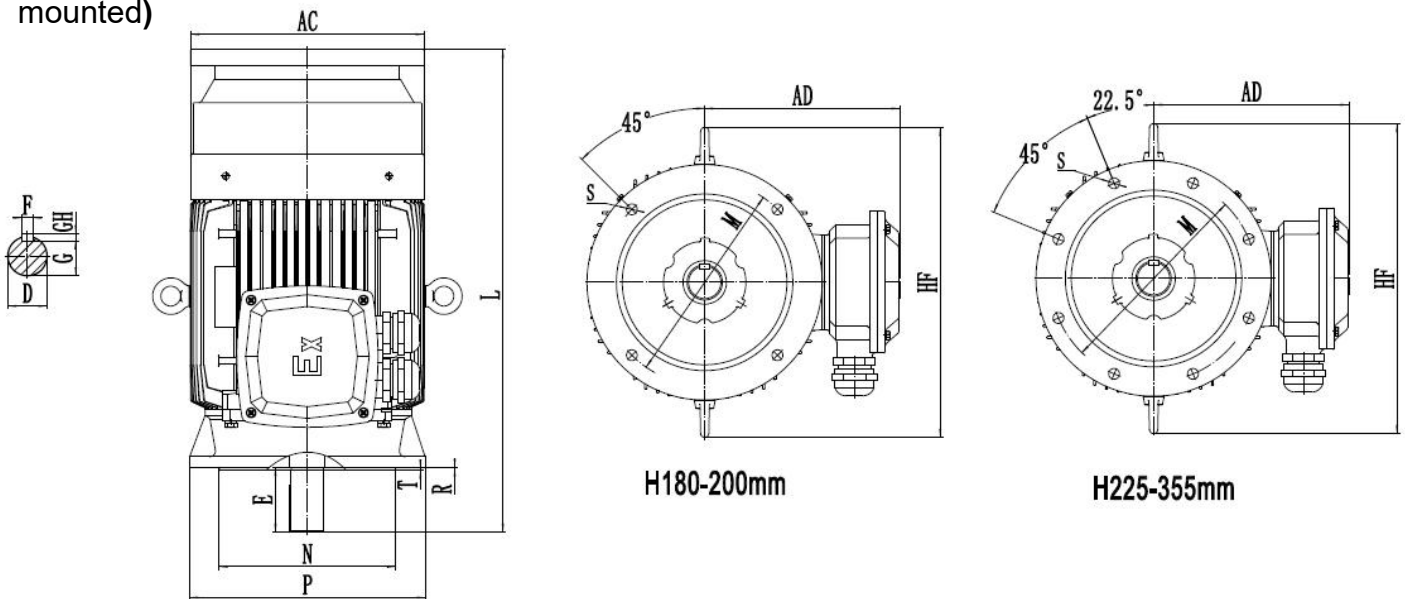
机座号 Frame	极数 Poles	安 装 尺 寸 Mounting Dimension														外形尺寸 Overall Dimension									
		A	B	C	D	E	F	G	H	M	N	P	R	S	T	K	AA	BB	HA	AB	AC	AD	HD	L	
80M	2.4.6.8	125	100	50	19	40	6	15.5	80	165	130	200	0	4-φ12	3.5	10	32	135	10	160	165	95	240	295	
90S	2.4.6.8	140	100	56	24	50	8	20	90	165	130	200	0	4-φ12	3.5	10	34	145	12	180	180	95	255	345	
90L			125															170						385	
100L	2.4.6.8	160	140	63	28	60	8	24	100	215	180	250	0	4-φ15	4	12	39	186	14	200	205	95	285	390	
112M	2.6.8	190	140	70	28	60	8	24	112	215	180	250	0	4-φ15	4	12	45	200	14	230	225	115	320	425	
	4																	230						455	
132S	2.4.6.8	216	140	89	38	80	10	33	132	265	230	300	0	4-φ15	4	12	55	190	18	265	270	115	410	475	
132M			178															230						510	

B35 (机座带底脚、端盖有凸缘 Foot and B5 flange mounted)



机座号 Frame	极数 Poles	安 装 尺 寸 Mounting Dimension														外形尺寸 Overall Dimension									
		A	B	C	D	E	F	G	H	M	N	P	R	S	T	K	AA	BB	HA	AB	AC	AD	HD	L	
160M	2.4.6.8	254	210	108	42	110	12	37	160	300	250	350	0	4-φ19	5	15	65	260	20	315	320	136	430	610	
160L			0										304											655	
180M	2.4.6.8	279	241	121	48	110	14	42.5	180	300	250	350	0	4-φ19	5	15	70	311	22	355	360	136	480	680	
180L			0										349											715	
200L	2.4.6.8	318	305	133	55	110	16	49	200	350	300	400	0	4-φ19	5	19	74	379	26	395	400	190	540	770	
225S	4.8	356	286	149	60	140	18	53	225	400	350	450	0	8-φ19	5	19	78	375	28	435	450	190	585	795	
225M	2	356	311	149	55	110	16	49	225	400	350	450	0	8-φ19	5	19	78	400	28	435	450	190	585	800	
	4.6.8				60	140	18	53																825	
250M	2	406	349	168	60	140	18	53	250	500	450	550	0	8-φ19	5	24	80	445	30	490	510	225	665	890	
	4.6.8				65			58																	
280S	2	457	368	190	65	140	18	58	280	500	450	550	0	8-φ19	5	24	90	485	35	545	550	225	710	975	
	4.6.8				75	140	20	67.5																1025	
280M	2	457	419	190	65	140	18	58	315	600	550	660	0	8-φ24	6	28	120	570	45	635	630	250	885	1180	
	4.6.8				75	140	20	67.5																1215	
315S	2	508	457	216	65	140	18	58	355	740	680	800	0	8-φ24	6	28	130	610	52	735	715	290	1040	1215	
	4.6.8.10				80	170	22	71																1245	
315M	2	508	457	216	65	140	18	58	355	740	680	800	0	8-φ24	6	28	130	610	52	735	715	290	1040	1290	
	4.6.8.10				80	170	22	71																1320	
315L	2	508	457	216	65	140	18	58	355	740	680	800	0	8-φ24	6	28	130	680	52	735	715	290	1040	1390	
	4.6.8.10				80	170	22	71																1420	
355M	2	610	457	216	75	140	20	67.5	355	740	680	800	0	8-φ24	6	28	130	690	52	735	715	290	1040	1500	
	4.6.8.10				95	170	25	86																1530	
355L1	2	610	457	216	75	140	20	67.5	355	740	680	800	0	8-φ24	6	28	130	750	52	735	715	290	1040	1530	
355L2	4.6.8.10				95	170	25	86																1530	
355L3	2	630	457	216	80	170	22	71	355	740	680	800	0	8-φ24	6	28	130	750	52	735	715	290	1040	1530	
355L4	4.6.8.10				110	210	28	100																1570	

V1 (立式安装、机座不带底脚、端盖有凸缘、轴伸向下的电动机 Vertical shaft down footless flange mounted)



机座号 Frame	极数 Poles	安 装 尺 寸 Mounting Dimension										外形尺寸 Overall Dimension												
		D	E	F	G	M	N	P	R	S	T	AC	AD	HF	L									
180M	2,4,6,8	48	110	14	42.5	300	250	350	0	4-Φ19	5	360	285	490	725									
180L	2,4,6,8														765									
200L	2,4,6,8	55	110	16	49	350	300	400	0	4-Φ19	5	400	335	550	825									
225S	4,8	60	140	18	53	400	350	450	0	8-Φ19	5	450	360	580	855									
225M	2	55	110	16	49										860									
		4,6,8	60	140	18	53	885																	
250M	2	60	140	18	53	500	450	550	0	8-Φ19	5	510	380	695	955									
		4,6,8			58																			
280S	2	65	140	18	58	500	450	550	0	8-Φ19	5	550	395	725	1045									
		4,6,8		75	20											67.5								
280M	2	65		18	58										1100									
		4,6,8		75	20											67.5								
315S	2	65	140	18	58	600	550	660	0	8-Φ24	6	630	565	860	1310									
		4,6,8,10	80	170	22										71	1340								
315M	2	65	140	18	58										1345									
		4,6,8,10	80	170	22										71	1375								
315L	2	65	140	18	58										1420									
		4,6,8,10	80	170	22										71	1450								
355M	2	75	140	20	67.5										740	680	800	0	8-Φ24	6	715	680	980	1530
		4,6,8,10	95	170	25																			86
355L1/L2	2	75	140	20	67.5	1640																		
		4,6,8,10	95	170	25	86	1670																	
355L3/L4	2	80	170	22	71	1670																		
		4,6,8,10	110	210	28	100	1710																	

接线盒的主要尺寸及出线孔的螺纹见下表:

Terminal box and the cable entry size are given in the table below:

序号 No.	机座号范围 Frame	接线端子尺寸 Terminal size	接地端子尺寸 Grounding terminal size	出线孔 (引接电缆) 尺寸 Cable entrance size
1	H80	M4	M5	1-M24×1.5
2	H90,H100	M5	M5	1-M24×1.5
3	H112, H132	M5	M5	2-M30×2
4	H160, H180	M6	M5	2-M36×2
5	H200, H225	M8	M8	2-M48×2
6	H250, H280	M10	M10	2-M64×2
7	H315	M16	M12	2-M64×2
8	H355	M20	M12	2-M72×2

常用的安装结构型式, 以及适用的机座号见下表:

Conventional mounting type and suitable frame size are given in following table (with “√”):

机座号 Frame	基本安装结构 Basic Type			派生的安装形式 Derived Type													
	B3	B5	B35	V1	V3	V5	V6	B6	B7	B8	V15	V17	V35	V37	B14	B34	V18
80~112	√	√	√	√	√	√	√	√	√	√	√	√	√	√	√	√	√
132~160	√	√	√	√	√	√	√	√	√	√	√	√	√	√	-	-	-
180~280	√	√	√	√	-	-	-	-	-	-	-	-	-	-	-	-	-
315~355	√	-	√	√	-	-	-	-	-	-	-	-	-	-	-	-	-

注: “√”表示可以制造生产的结构型式